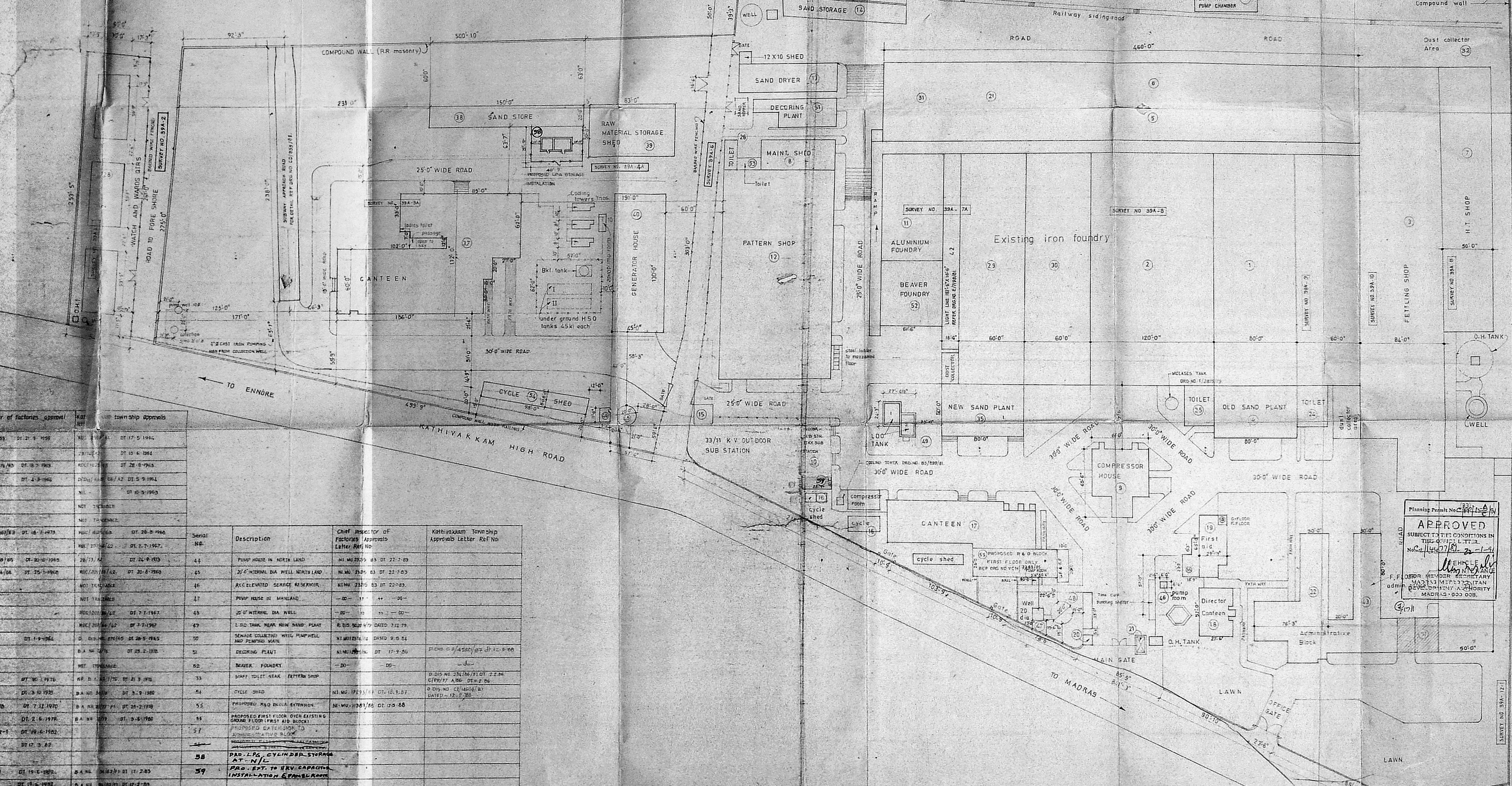




TO GUDUR ← TO MADRAS →

RAILWAY PROPERTY



PROPOSED SHOWN THUS   
BOUNDARY SHOWN THUS   
ROADS SHOWN THUS

Serial No.	Description	Chief Inspector of Factories Approval Letter Ref. No.	Kathivakkam Township Approvals Letter Ref. No.
1	MANUFACTURE REPAIRMENT	D. Dec. (80) 2067/83 DT. 16-7-1973	MS. 140/663 DT. 28-8-1962
2	MANUFACTURE REPAIRMENT	D. Dec. (80) 2067/83 DT. 16-7-1973	MS. 140/663 DT. 28-8-1962
3	MANUFACTURE REPAIRMENT	D. Dec. (80) 2067/83 DT. 16-7-1973	MS. 140/663 DT. 28-8-1962
4	MANUFACTURE REPAIRMENT	D. Dec. (80) 2067/83 DT. 16-7-1973	MS. 140/663 DT. 28-8-1962
5	MANUFACTURE REPAIRMENT	D. Dec. (80) 2067/83 DT. 16-7-1973	MS. 140/663 DT. 28-8-1962
6	MANUFACTURE REPAIRMENT	D. Dec. (80) 2067/83 DT. 16-7-1973	MS. 140/663 DT. 28-8-1962
7	MANUFACTURE REPAIRMENT	D. Dec. (80) 2067/83 DT. 16-7-1973	MS. 140/663 DT. 28-8-1962
8	MANUFACTURE REPAIRMENT	D. Dec. (80) 2067/83 DT. 16-7-1973	MS. 140/663 DT. 28-8-1962
9	MANUFACTURE REPAIRMENT	D. Dec. (80) 2067/83 DT. 16-7-1973	MS. 140/663 DT. 28-8-1962
10	MANUFACTURE REPAIRMENT	D. Dec. (80) 2067/83 DT. 16-7-1973	MS. 140/663 DT. 28-8-1962
11	MANUFACTURE REPAIRMENT	D. Dec. (80) 2067/83 DT. 16-7-1973	MS. 140/663 DT. 28-8-1962
12	MANUFACTURE REPAIRMENT	D. Dec. (80) 2067/83 DT. 16-7-1973	MS. 140/663 DT. 28-8-1962
13	MANUFACTURE REPAIRMENT	D. Dec. (80) 2067/83 DT. 16-7-1973	MS. 140/663 DT. 28-8-1962
14	MANUFACTURE REPAIRMENT	D. Dec. (80) 2067/83 DT. 16-7-1973	MS. 140/663 DT. 28-8-1962
15	MANUFACTURE REPAIRMENT	D. Dec. (80) 2067/83 DT. 16-7-1973	MS. 140/663 DT. 28-8-1962
16	MANUFACTURE REPAIRMENT	D. Dec. (80) 2067/83 DT. 16-7-1973	MS. 140/663 DT. 28-8-1962
17	MANUFACTURE REPAIRMENT	D. Dec. (80) 2067/83 DT. 16-7-1973	MS. 140/663 DT. 28-8-1962
18	MANUFACTURE REPAIRMENT	D. Dec. (80) 2067/83 DT. 16-7-1973	MS. 140/663 DT. 28-8-1962
19	MANUFACTURE REPAIRMENT	D. Dec. (80) 2067/83 DT. 16-7-1973	MS. 140/663 DT. 28-8-1962
20	MANUFACTURE REPAIRMENT	D. Dec. (80) 2067/83 DT. 16-7-1973	MS. 140/663 DT. 28-8-1962
21	MANUFACTURE REPAIRMENT	D. Dec. (80) 2067/83 DT. 16-7-1973	MS. 140/663 DT. 28-8-1962
22	MANUFACTURE REPAIRMENT	D. Dec. (80) 2067/83 DT. 16-7-1973	MS. 140/663 DT. 28-8-1962
23	MANUFACTURE REPAIRMENT	D. Dec. (80) 2067/83 DT. 16-7-1973	MS. 140/663 DT. 28-8-1962
24	MANUFACTURE REPAIRMENT	D. Dec. (80) 2067/83 DT. 16-7-1973	MS. 140/663 DT. 28-8-1962
25	MANUFACTURE REPAIRMENT	D. Dec. (80) 2067/83 DT. 16-7-1973	MS. 140/663 DT. 28-8-1962
26	MANUFACTURE REPAIRMENT	D. Dec. (80) 2067/83 DT. 16-7-1973	MS. 140/663 DT. 28-8-1962
27	MANUFACTURE REPAIRMENT	D. Dec. (80) 2067/83 DT. 16-7-1973	MS. 140/663 DT. 28-8-1962
28	MANUFACTURE REPAIRMENT	D. Dec. (80) 2067/83 DT. 16-7-1973	MS. 140/663 DT. 28-8-1962
29	MANUFACTURE REPAIRMENT	D. Dec. (80) 2067/83 DT. 16-7-1973	MS. 140/663 DT. 28-8-1962
30	MANUFACTURE REPAIRMENT	D. Dec. (80) 2067/83 DT. 16-7-1973	MS. 140/663 DT. 28-8-1962
31	MANUFACTURE REPAIRMENT	D. Dec. (80) 2067/83 DT. 16-7-1973	MS. 140/663 DT. 28-8-1962
32	MANUFACTURE REPAIRMENT	D. Dec. (80) 2067/83 DT. 16-7-1973	MS. 140/663 DT. 28-8-1962
33	MANUFACTURE REPAIRMENT	D. Dec. (80) 2067/83 DT. 16-7-1973	MS. 140/663 DT. 28-8-1962
34	MANUFACTURE REPAIRMENT	D. Dec. (80) 2067/83 DT. 16-7-1973	MS. 140/663 DT. 28-8-1962
35	MANUFACTURE REPAIRMENT	D. Dec. (80) 2067/83 DT. 16-7-1973	MS. 140/663 DT. 28-8-1962
36	MANUFACTURE REPAIRMENT	D. Dec. (80) 2067/83 DT. 16-7-1973	MS. 140/663 DT. 28-8-1962
37	MANUFACTURE REPAIRMENT	D. Dec. (80) 2067/83 DT. 16-7-1973	MS. 140/663 DT. 28-8-1962
38	MANUFACTURE REPAIRMENT	D. Dec. (80) 2067/83 DT. 16-7-1973	MS. 140/663 DT. 28-8-1962
39	MANUFACTURE REPAIRMENT	D. Dec. (80) 2067/83 DT. 16-7-1973	MS. 140/663 DT. 28-8-1962
40	MANUFACTURE REPAIRMENT	D. Dec. (80) 2067/83 DT. 16-7-1973	MS. 140/663 DT. 28-8-1962
41	MANUFACTURE REPAIRMENT	D. Dec. (80) 2067/83 DT. 16-7-1973	MS. 140/663 DT. 28-8-1962
42	MANUFACTURE REPAIRMENT	D. Dec. (80) 2067/83 DT. 16-7-1973	MS. 140/663 DT. 28-8-1962
43	MANUFACTURE REPAIRMENT	D. Dec. (80) 2067/83 DT. 16-7-1973	MS. 140/663 DT. 28-8-1962
44	MANUFACTURE REPAIRMENT	D. Dec. (80) 2067/83 DT. 16-7-1973	MS. 140/663 DT. 28-8-1962
45	MANUFACTURE REPAIRMENT	D. Dec. (80) 2067/83 DT. 16-7-1973	MS. 140/663 DT. 28-8-1962
46	MANUFACTURE REPAIRMENT	D. Dec. (80) 2067/83 DT. 16-7-1973	MS. 140/663 DT. 28-8-1962
47	MANUFACTURE REPAIRMENT	D. Dec. (80) 2067/83 DT. 16-7-1973	MS. 140/663 DT. 28-8-1962
48	MANUFACTURE REPAIRMENT	D. Dec. (80) 2067/83 DT. 16-7-1973	MS. 140/663 DT. 28-8-1962
49	MANUFACTURE REPAIRMENT	D. Dec. (80) 2067/83 DT. 16-7-1973	MS. 140/663 DT. 28-8-1962
50	MANUFACTURE REPAIRMENT	D. Dec. (80) 2067/83 DT. 16-7-1973	MS. 140/663 DT. 28-8-1962
51	MANUFACTURE REPAIRMENT	D. Dec. (80) 2067/83 DT. 16-7-1973	MS. 140/663 DT. 28-8-1962
52	MANUFACTURE REPAIRMENT	D. Dec. (80) 2067/83 DT. 16-7-1973	MS. 140/663 DT. 28-8-1962
53	MANUFACTURE REPAIRMENT	D. Dec. (80) 2067/83 DT. 16-7-1973	MS. 140/663 DT. 28-8-1962
54	MANUFACTURE REPAIRMENT	D. Dec. (80) 2067/83 DT. 16-7-1973	MS. 140/663 DT. 28-8-1962
55	MANUFACTURE REPAIRMENT	D. Dec. (80) 2067/83 DT. 16-7-1973	MS. 140/663 DT. 28-8-1962
56	MANUFACTURE REPAIRMENT	D. Dec. (80) 2067/83 DT. 16-7-1973	MS. 140/663 DT. 28-8-1962
57	MANUFACTURE REPAIRMENT	D. Dec. (80) 2067/83 DT. 16-7-1973	MS. 140/663 DT. 28-8-1962
58	MANUFACTURE REPAIRMENT	D. Dec. (80) 2067/83 DT. 16-7-1973	MS. 140/663 DT. 28-8-1962
59	MANUFACTURE REPAIRMENT	D. Dec. (80) 2067/83 DT. 16-7-1973	MS. 140/663 DT. 28-8-1962

Serial No.	Description	Chief Inspector of Factories Approval Letter Ref. No.	Kathivakkam Township Approvals Letter Ref. No.
44	PUMP HOUSE IN NORTH LAND	N.M. 2525/83 DT. 22-7-63	
45	20" INTERNAL DIA WELL NORTH LAND	N.M. 2525/83 DT. 22-7-63	
46	ACCUMULATED SERVICE RESERVOIR	N.M. 2525/83 DT. 22-7-63	
47	PUMP HOUSE IN MAINLAND	-00-11-11-00-	
48	20" INTERNAL DIA WELL	-00-11-11-00-	
49	L.I.D. TANK NEAR NEW SAND PLANT	R. 05 5624/79 DATED 7.12.79	
50	SEWAGE COLLECTOR WITH PUMPWELL AND PUMPING MAIN	N.M. 2525/83 DATED 9.5.64	
51	DECORING PLANT	N.M. 1723/64 DT. 17-9-56	Plan No. 1/550/64 dt. 12-9-56
52	BEAVER FOUNDRY	-00-11-11-00-	-00-
53	SHARP TOILET NEAR PATTERN SHOP	D.O. No. 24176/71 DT. 2.8.66	
54	CYCLE SHED	N.M. 1723/64 DT. 12.9.57	
55	PROPOSED R.S.D. BULLA EXTENSION	N.M. 1361/65 DT. 12.9.65	
56	PROPOSED FIRST FLOOR OVER EXISTING GROUND FLOOR FIRST AID BLOCK	D.O. No. 24176/71 DT. 2.8.66	
57	PROPOSED EXTENSION TO EXISTING PATTERNS BLOCK	D.O. No. 24176/71 DT. 2.8.66	
58	PRO. EXT. TO H.V. CAPACITOR INSTALLATION & PANEL ROOM	D.O. No. 24176/71 DT. 2.8.66	
59	PRO. EXT. TO H.V. CAPACITOR INSTALLATION & PANEL ROOM	D.O. No. 24176/71 DT. 2.8.66	

Planning Permit No. *10/15/84*  
**APPROVED**  
SUBJECT TO THE CONDITIONS IN THE OFFICE LETTER No. *10/15/84*  
*M. Narayana Rao*  
F.F. OFFICER MEMBER SECRETARY  
MADRAS METRO POLITICAL  
ADMIN. DEVELOPMENT AUTHORITY  
MADRAS-600 008.

ENNORE FOUNDRIES LTD.  
Ennore Madras 57  
1629  
MAINLAND AND NORTH LAND  
SITE PLAN  
drawn: L.R.K. scale: 1:100 (1-35-59)  
checked: date:  
For ENNORE FOUNDRIES LTD.  
K. SHANMUGAM,  
General Manager,  
Ennore & Mainland  
ENNORE FOUNDRIES LTD.  
MADRAS-600 008  
JINJI & CO. E.C.E.  
Licensed Building Surveyors,  
Kathivakkam Township  
Madras-600 057.  
NO. RK/299/87



15

For ENNORE FOUNDRIES LTD.

*K. Shanmugam*  
K. SHANMUGAM,  
General Manager,  
Projects & Plant Engg.

Box 2703

*Jinnoji Rao*  
JINNOJI RAO, L C E.  
Licensed Building Surveyor  
Kathirakham Municipal Township  
Madras-600 057.

ENNORE FOUNDRIES LTD  
ENNORE MADRAS  
11KV CAPACITOR INSTALLATION  
AND PANEL ROOM IN MAIN LAND  
ELEVATION

SCALE: 1:50 DATE: 14.12.88  
DRAWN: GE. CHECKED:

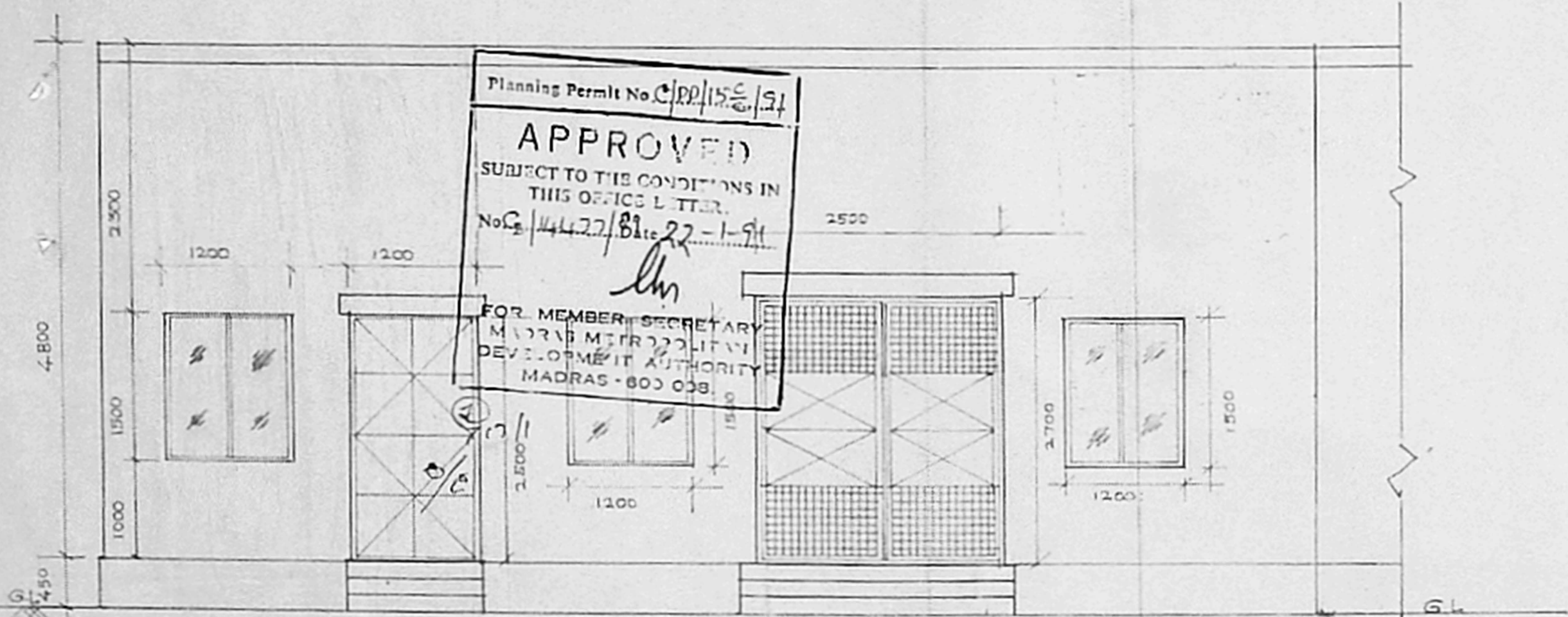
M/S C.R. NARAYANA RAO  
ARCHITECTS AND ENGINEERS  
L22 MADRAS 4

*C.R. Narayana Rao*  
B.TECH (HONS), M.S. (III), PND. MAM  
Sec. 06, F.I.E., F.I.V., REGD ARCHITECT


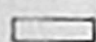
DRG NO GR/7463/88

3658  
PROPOSED EXTENSION      EXISTING 11KV SWITCHGEAR ROOM

Planning Permit No. C/PP/15.C/54  
**APPROVED**  
SUBJECT TO THE CONDITIONS IN  
THIS OFFICE LETTER.  
No. C/4427/88 dtc 22-1-91  
*ln*  
FOR MEMBER SECRETARY  
MADRAS METROPOLITAN  
DEVELOPMENT AUTHORITY  
MADRAS-600 008.



FRONT ELEVATION

PROPOSED        
EXISTING      

FOR PLAN AND SECTION REFER DRG NO TL/205A/88